

# CommVault Galaxy® Data Protection 7.0 for Microsoft SharePoint Systems

Reliable Data Protection for SharePoint Systems and Their Environments

## Key Benefits

- ▶ Simple-to-use, central browser interface
- ▶ Maximum data availability—online restore of individual SharePoint documents and categories with attributes intact
- ▶ Rapid recovery of SharePoint workspaces, databases and systems including config\_db
- ▶ Seamless VSS integration with Windows Server 2003
- ▶ Add-on continuous replication capability to protect remote SharePoint and Windows data

*Easily add capabilities for protection, archive, replication and snapshot recovery, all managed from the same Unified Console.*

## The Business Problem

Information is a valuable corporate asset. Microsoft SharePoint products and technologies improve access to information with portal, document management and collaboration capabilities. As business relies more on SharePoint, it becomes critical to protect the documents and files in SharePoint portals. Administrators need a reliable data protection strategy for SharePoint.

## The CommVault® Solution

CommVault Galaxy® Backup & Recovery with iDataAgents (iDAs) for SharePoint protect documents and files residing in SharePoint Portal repositories. Whether you are using SharePoint Portal Server 2001, SharePoint Portal Server 2003, Windows SharePoint Services 2003, or a combination, Galaxy software provides reliable and easy-to-manage data protection capabilities. SharePoint Portal farms depend on Windows file system, SQL Server and Active Directory, so Galaxy software's unified approach to protecting the entire SharePoint environment is also critical to a SharePoint protection strategy.

## The CommVault® Solution

### Obtain Reliable, Efficient Data Protection for SharePoint

Galaxy software delivers unmatched granular online restore of SharePoint documents and other objects and items, such as category

folders, areas and document libraries. Document, form and picture libraries are protected including documents and items in the Forms Folder, user-defined columns, lists including columns, and alerts associated with documents and list items. For SharePoint 2007, additional libraries and lists are supported including page, report, slide, translation management, and Wiki page libraries.

Drill down through your SharePoint site structure to recover objects at any level, including individual documents. Search for objects and items by name, version, author, title and size. Recover any version of any SharePoint object that has been backed up. When restoring a collection of items, like a document library, select to either overwrite or skip existing items to speed restore and avoid one-document-at-a-time manual selection.

Most day-to-day SharePoint restores will be of documents and other objects and items that have been deleted accidentally by end-users. Galaxy software restores individual SharePoint documents with attributes intact for rapid, one-step recovery to the production SharePoint portal—without having to restore the database. Full system restore for SharePoint servers is also fast and easy to perform, using Galaxy Windows System State recovery combined with SharePoint database recovery. Full restores can be performed on Windows 2000, XP and Server 2003 systems.



## Key Capabilities

### ► Simplicity and Ease-of-Use—

CommVault® software is easy to install, configure and manage.

### ► Web Browser-Based Management—

Administrators can manage SharePoint data from virtually any location whether office, hotel or home, that has web access to the CommVault environment.

### ► Microsoft Proven

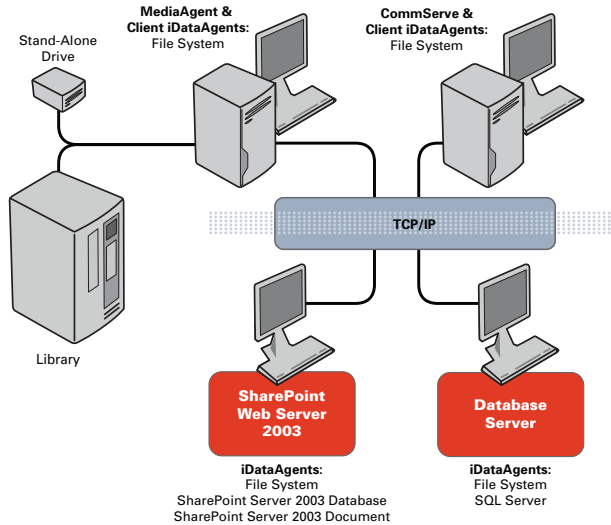
**Reliability**—Since 1999, Microsoft/IT teams in Redmond have enjoyed the reliability of using CommVault software to manage production Windows and Windows application data for their own Exchange and Office product teams as well as other groups within MSFT.

### ► Cutting-Edge Microsoft Technology Integration—

By working closely with Microsoft to be on the cutting-edge of Windows innovations and introductions, CommVault software enables accelerated adoption of SharePoint and Windows system new versions.

### ► Support of Combined

**Environments**—CommVault software enables management of mixed Windows and SharePoint release versions in the same deployments, easing upgrades and extending the life of older systems.



*CommVault Galaxy iDataAgents for SharePoint, Windows file system and SQL Server work together to protect a small SharePoint server farm*

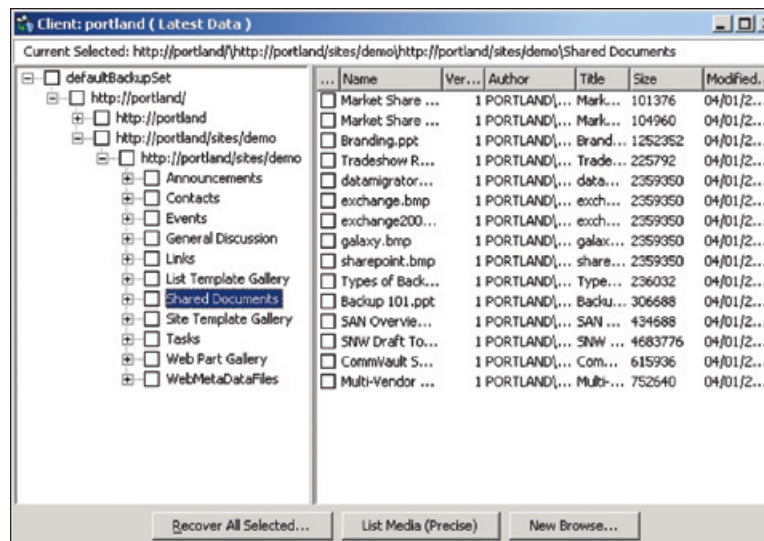
## Manage All Data Critical to SharePoint

Galaxy software provides iDAs for Windows file system, to protect additional files critical to SharePoint including root directories of SharePoint Services, custom web part assemblies, custom templates, IIS and IIS root directories, and add-in software.

Within a SharePoint server farm, CommVault Galaxy iDA for SQL Server will also be used to protect remote databases. CommVault Galaxy software provides SQL Server transaction-log backup. Managing the transaction log permits point-in-time restore, database restore with transaction log replay, and log shipping to other SQL Server systems.

CommVault Galaxy software also provides an iDA for granular protection of the Active Directory Domain Controller containing the SharePoint document ownership and permissions schema.

All of this protection capability is managed from the CommVault Galaxy Unified Console, making it simple and easy to protect all data critical to SharePoint information portals.



*Granular browse, point-and-click selection and restore of individual SharePoint documents without having to restore the database*

# Data Secured by the SharePoint Document iDA

Data	SharePoint Sever 2003/2007 (Common)	SharePoint Server 2007 (Added)
<b>Columns</b>	User-defined Columns: <ul style="list-style-type: none"> <li>· Number</li> <li>· Single line of text</li> <li>· Multiple lines of text</li> <li>· Yes/No</li> <li>· Calculated</li> <li>· Date and Time</li> </ul>	Same
<b>Alerts</b>	Alerts associated with Documents and List Items	Same
<b>Libraries</b>	<ul style="list-style-type: none"> <li>· Document Libraries</li> <li>· Form Libraries</li> <li>· Picture Libraries</li> </ul>	<ul style="list-style-type: none"> <li>· Page Libraries</li> <li>· Report Libraries</li> <li>· Slide Libraries</li> <li>· Translation Management Libraries</li> <li>· Wiki Page Libraries</li> </ul>
<b>Lists</b>	<ul style="list-style-type: none"> <li>· Announcements</li> <li>· Calendars</li> <li>· Contacts</li> <li>· Custom Lists (and in Datasheet Views)</li> <li>· Discussions</li> <li>· Issues</li> <li>· Links</li> <li>· Surveys</li> <li>· Tasks</li> </ul>	<ul style="list-style-type: none"> <li>· Converted Forms</li> <li>· Custom Workflow Process</li> <li>· Data Connection History</li> <li>· Datasources</li> <li>· Languages and Translators</li> <li>· No Code Workflows</li> </ul>
<b>Views</b>	Library and List Views	Same

## Key Features and Benefits

### Features

### Benefits

#### Granular restore of SharePoint documents and other objects and items

Restores with permissions intact, preserving a one-step recovery process and avoiding the need for a separate recovery server. Granular restore for SharePoint products and technologies includes documents, lists, surveys, picture libraries, other libraries, forms, templates, .aspx pages, contacts, sites, and other objects and items. For a complete list of the data types secured for SharePoint, see the table earlier in this datasheet.

#### Open file support

Enables backup protection of open files with no need to disrupt end-user productivity during backup.

#### Comprehensive range of independent backup options

Perform full, incremental, differential and synthetic backup of SharePoint databases and documents. Schedule the backup cycle for SharePoint databases and document folders independently, and specify independent short and long-term retention periods and media.

#### Site collection restore, and sub-site restore

Ensures comprehensive restore of SharePoint with all site information intact.

#### Preserves SharePoint 2003 object properties

Enables management of individual objects including documents, items, lists, surveys, templates, .ASPX pages, contacts, and content.

#### Comprehensive database protection

Offers database-level, site collection, top-site and document-level production of SharePoint data. This includes protection of portal sites including service, profile and site databases, portal site indexes, content databases, team site databases, site collections, and encryption keys.

#### Comprehensive SharePoint Browse

Browse across all documents on a SharePoint Server with a simple point-and-click drill-down approach, to eliminate searching for documents and databases across tape sets.

#### Comprehensive SharePoint search

Sort and search for documents by name, version, author, title and size.

#### Right-click document and library version browse and selection

Right-click to browse and select from multiple versions of the same SharePoint document or document library. Select one, several or all to restore any version that has been backed up.

#### Configuration database protection and rewind

Rewind the config\_db as part of a portal restore process, to restore to a selected point in time.

#### Preserve original security settings

Option to preserve for SharePoint 2003 and 2007.

#### Out-of-place restore to a different location

Select the original location, or restore to another location or client for easy migration of SharePoint deployments and data.

#### Overwrite or skip existing items on a restore

Speeds restore of collections of items, such as a document library, when end-users have deleted some but not all documents and only lost documents need to be restored.

## Key Features and Benefits (continued)

### Features

### Benefits

#### **Integrated SQL Server protection with transaction log management**

Managed from the same CommVault Galaxy Unified Console, to protect SQL Server databases stored on remote SharePoint Portal servers in server farms. Protecting transaction logs permits point-in-time restores, database restores with transaction log replays, and log shipping to other SQL Server systems. Galaxy protection for SQL Server includes VSS and VDI support and integration which is critical for SharePoint; for more information, see the CommVault information on SQL Server protection.

#### **Optional firewall configuration wizard**

Provided with the core CommVault Galaxy software, this capability is useful for configuring ports through a firewall for remote SharePoint systems. In Internet and extranet scenarios, it is common to deploy SharePoint components in a screened subnet.

#### **Integrated Windows System State and Active Directory Protection**

Enables rapid disaster recovery of the entire Exchange server system following a crash. This includes rebuilding the Active Directory Domain Controller containing the SharePoint document ownership and permissions schema.

#### **Volume Shadow Copy Service (VSS) Support**

Integrated to leverage Windows Server 2003 built-in snapshot capabilities for point-in-time recovery of SQL Server databases.

#### **Recommended and described in Microsoft Windows Server System Reference Architecture (WSSRA)**

Provides a best practice recommended by Microsoft for SharePoint products and technologies data management and protection. Improves supportability of the solution, because Microsoft is already working with the CommVault software technology.

#### **Operates in Heterogeneous Server Environment**

Enables heterogeneous enterprise environments to scale and protect mission-critical SharePoint data according to the infrastructure available and desired.

## System Requirements

---

<b>SharePoint</b>	Portal Server 2003, Services 2003, Server 2007
<b>Platforms</b>	Microsoft Windows. Clustering options are supported.

**Note:** System Requirements are subject to change. For up-to-date System Requirements, please refer to product documentation on the CommVault website at <http://www.commvault.com>

## SIMPANA™ software suite

CommVault's Simpana™ suite of Data Protection, Archive, Replication, Resource Management and Search software is designed to work together seamlessly from the ground up, sharing a single code and common function set. This exclusive single-platform architecture enables unparalleled software efficiency, performance and reliability for unprecedented control over data growth, costs and risk.

---

**[www.commvault.com](http://www.commvault.com) ■ 888.746.3849 ■ E-mail: [info@commvault.com](mailto:info@commvault.com)**

CommVault Worldwide Headquarters ■ 2 Crescent Place ■ Oceanport, NJ 07757 ■ 888-746-3849 ■ Fax: 732-870-4525

CommVault Regional Offices: United States ■ Europe ■ Middle East & Africa ■ Asia-Pacific ■ Mexico & Latin America ■ Canada ■ India ■ Oceania

©1999-2007 CommVault Systems, Inc. All rights reserved. CommVault, CommVault and logo, the "CV" logo, CommVault Systems, Solving Forward, SIM, Singular Information Management, Simpana, CommVault Galaxy, Unified Data Management, QiNetix, Quick Recovery, QR, QNet, GridStor, Vault Tracker, QSnap, Recovery Director, CommServe, CommCell, and InnerVault are trademarks or registered trademarks of CommVault Systems, Inc. All other third party brands, products, service names, trademarks, or registered service marks are the property of and used to identify the products or services of their respective owners. All specifications are subject to change without notice.

