

# CommVault Galaxy® Data Protection 7.0 for NAS NDMP Storage Systems

Simplified, Enterprise-Class Protection for Business-Critical Collaborative Applications and Information

## Key Benefits

- ▶ **Simple to use**— unified browser interface to manage all data
- ▶ **Improve performance**— fast backup and recovery for large-scale NAS
- ▶ **Cut downtime**—Direct Access Restore (DAR) enables fast single file restores
- ▶ **Enhance System Administrator productivity**— Full and incremental NDMP backups reduce backup windows to ensure that all data is safeguarded
- ▶ **Keep NAS data available through failures and outages**—Easily re-direct data restore to alternate systems and locations
- ▶ **Migrate data among NAS devices**—easily include new systems and technologies without breaking data management

*Easily add capabilities for protection, archive, replication and snapshot recovery, all managed from the same Unified Console.*

## The Business Challenge

Network Attached Storage (NAS) systems such as those from Hitachi, Network Appliance, EMC, and BlueArc are dedicated file servers running software optimized for sharing data over networks. They provide high-performance data access for high-bandwidth, collaborative applications across local and wide area networks. To realize the full value of these systems to support your business, a complimentary, bullet-proof data protection strategy is a must.

## The CommVault® Solution

CommVault Galaxy® iDataAgents for NAS NDMP systems provide easy-to-use data and storage management capabilities that protect UNIX and Windows data residing on your choice of market-leading NAS devices. CommVault Galaxy software leverages the Network Data Management Protocol (NDMP) to deliver a proven data protection solution with efficient backup and reliable restore.

Keep the data from your NAS file system available, through system, network and site outages. Restore data quickly and easily, and re-direct restore to alternate NAS systems for testing, staging and disaster recovery.

## Efficient, Centralized Management

CommVault Galaxy software helps you to centralize and automate backup and restore operations across large-scale, enterprise-wide deployments. Its unified architecture allows

a single policy to be defined to manage the data stored on NAS, SAN or LAN systems—and among multiple brands of NAS devices. CommVault Galaxy software's flexible, easy-to-use browser-based interface manages the same way for local or remote data. Backups and restores can be scheduled to automatically run and report pertinent events to a centralized event log. Routine administrative tasks can be automated, freeing up personnel to focus on more critical issues.

All of which adds up to more NAS data managed with less administrative burden.

In addition, a browser-based Unified Console provides you with complete management control of the entire backup and recovery process, across systems and devices. This complements NAS support for Windows web-based management capabilities when available, to deliver complete solution management from a single point-of-control.

## Maximize the Value of Backup Systems and Devices

CommVault Galaxy software offers built-in options for managing the capabilities of automated tape libraries (for example, those using ACSLS), to reduce administrator burden while ensuring that you get the best value from these systems. Also, CommVault Galaxy software allows you to share libraries among different brands of NAS devices, and combine with protection of server-based data. Notably,

## Key Capabilities

### ▶ Ultra-rapid deployment with existing infrastructure—

CommVault software is easy to install, configure and manage. Support for a wide range of UNIX, Linux and Windows platforms and application versions makes it easier to maintain your systems environment.

### ▶ Web browser-based management—

Administrators and operators can manage NAS data from virtually any location with web access, complementing web-based NAS management capabilities when available.

### ▶ Fully configurable user-level security access levels—

Define and assign operational and management activities to different users and user groups.

### ▶ Simple-to-operate NAS data recovery—

Out-of-box simple, guided recovery for NAS data that makes it easy for operators to handle recovery tasks.

### ▶ Combined NDMP and non-NDMP Backup—

Share valuable backup servers and devices rather than dedicating systems.

### ▶ “3-way” LAN-Free Backup—

Use NAS direct-attach connections to storage devices to backup and recover data from other systems.

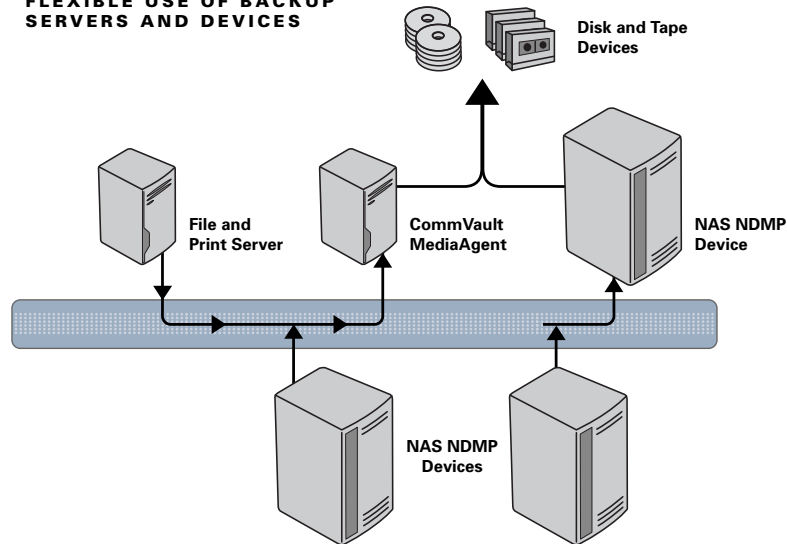
### ▶ Enhanced Disaster Recovery—

Use CommVault Galaxy software to backup one NAS system to another at a remote site.

### ▶ Migrate data from one brand of NAS to another—

Faster and easier to combine your choice of NAS systems, with central management and data movement from one brand of NAS to another.

## FLEXIBLE USE OF BACKUP SERVERS AND DEVICES



a single tape library can be shared among NAS systems and CommVault Galaxy backup nodes (Media Agents) for combined NDMP and non-NDMP backup. In addition, CommVault Galaxy software offers library sharing among NAS systems, optimizing investments in disk and tape devices.

## Reliable, Flexible Options for NAS Data Backup and Recovery

CommVault Galaxy software maximizes data availability for NAS systems with choices of direct-attached or “3-way” LAN-free configurations. Data is directly transferred to and from the disk or tape drive over a local connection. In “3-way” backup, data is transferred across the LAN between two NAS systems of the same type. Data then flows through the NAS system directly to an attached disk or tape library.

### Enhanced Disaster Recovery

Obtain more flexibility and options for defining disaster recovery by using CommVault Galaxy software to backup one NAS system to another at a remote site.

## More Jobs Complete with CommVault Galaxy® Failover Resume

In the event that a CommVault Galaxy Media Agent fails, alternate Agents can automatically resume backup and recovery jobs. Resume means that the job does not have to restart from the beginning, but resumes from the point of failure. This can be critical for finishing long jobs, and translates specifically into higher job success rates. CommVault Galaxy software also resumes jobs using alternative network connections when networks drop. CommVault Galaxy software uses this same capability to switch backup jobs to alternative tape drives when drives fail. The advanced design of CommVault Galaxy software preserves easy, one-step recovery even when backup copies span tapes.

## Point-and-Click Reporting

Reports that verify that backup jobs ran—and completed—along with recovery job history, tape tracking and rotation, operator and administrator audit tracking and other key metrics are available with easy point-and-click access right from the CommVault Unified Console. Reports can be saved, exported and attached to email for easy distribution. In the same point-and-click interface, reports can also be scheduled to be created and sent through email—without administrator assistance.

## Key Features and Benefits

### Features

### Benefits

#### Direct Access Restore (DAR) Support

Offers maximum flexibility and lowest TCO for backup and recovery of NAS storage systems.

#### Comprehensive implementation of NDMP 3

Supports the DAR features of NDMP to enable fast restore of specific files and directories, significantly reducing restore times.

#### Full, incremental and differential NDMP backup options

Provides the best and most complete data protection strategies for NAS storage systems.

#### Local attached LAN free and "3-way" backups

Matches data protection strategies with the distribution of data. LAN free backup for the largest storage systems reduces backup window.

#### Restore individual files, volumes or directories

Scales the type of recovery to the scope of the data loss. Reduces unnecessary data movement to save time during recovery process.

#### Single unified view of all storage resources

Reduces management, training and administration cost. Ensures consistent data protection policies are applied to all server or LAN-based storage and to NAS storage system.

#### Self-healing process

Persistent retries of failed processes increase reliability of data protection. Failover resume completes jobs using alternate data paths and systems, when equipment and networks fail.

#### Unified Console provided as a web-based browser interface

Offers a common look and feel for managing all storage resources, policies and jobs. Right-click shortcuts improve administrator efficiency, save time, and help ensure administrative tasks are completed accurately.

#### Administer storage policies, backup and restores

Reduces training and administration cost. Enables consistent backup and recovery strategies for all data. Enables faster and more accurate search and recovery.

#### Operational window

Enables enterprise control of data management activities.

#### Event monitoring and viewing with filtering

Allows administrators to track, monitor, and display events.

#### Media Agent, iDataAgent and CommServe

Implement advanced data protection strategies for either centralized or distributed management by using modular components, with combined control of data on NAS storage systems, SAN, and server-attached storage.

#### Advanced Library and Device Management options

Provides transparent movement of data across different storage tiers, including disk-to-disk and disk-to-disk-to-tape data movement built into the backup process.

#### Advanced media management capabilities

Enterprise control of large-scale libraries, mixed drives, and removable media. Drive spanning and tape appending capabilities enable backup operations to continue when failures occur.

#### NDMP Remote Server

Data from NAS file servers can be backed up to a library attached to AIX, Linux, Solaris and Microsoft Windows Media Agents. This enables backup and recovery of NAS systems that do not have libraries locally attached, as well as remote NAS system protection.

## Additional Solutions for NAS

CommVault® offers a suite of data management software built on the same software platform so that all capabilities work together. This makes it easy to add capabilities when and how you need them. For NAS devices, consider adding:

▶ **Continuous Data Replicator (CDR)**

- Remote Office Data Centralization and Protection
- Disaster Recovery
- Mount and Self-Restore of Replicated Data by Users

▶ **Quick Recovery™ Software**

- Higher Availability of Oracle , Exchange and SQL Server Services Using NAS-Embedded Snapshot Recovery
- More Frequent Points in Time of Protection
- Faster Recovery Time

▶ **Archive for NAS**

- Active-archive of NAS data to save on disk space
- Reduce the time required for backup and restore of NAS data
- Use NAS disk space more efficiently

## System Requirements

<b>NAS</b>	BlueArc, Hitachi, EMC Celerra DART, NetApp ONTAP, Pillar Data, Agami, ONstor, Archivas
<b>Platforms</b>	AIX, Solaris, Microsoft Windows, Red Hat Linux. Clustering is also supported.

**Note:** System Requirements are subject to change. For up-to-date System Requirements including 32- and 64-bit systems support, please refer to product documentation on the CommVault website at <http://www.commvault.com>

## SIMPANA™ software suite

CommVault's Simpana™ suite of Data Protection, Archive, Replication, Resource Management and Search software is designed to work together seamlessly from the ground up, sharing a single code and common function set. This exclusive single-platform architecture enables unparalleled software efficiency, performance and reliability for unprecedented control over data growth, costs and risk.

[www.commvault.com](http://www.commvault.com) ■ 888.746.3849 ■ E-mail: [info@commvault.com](mailto:info@commvault.com)

CommVault Worldwide Headquarters ■ 2 Crescent Place ■ Oceanport, NJ 07757 ■ 888-746-3849 ■ Fax: 732-870-4525

CommVault Regional Offices: United States ■ Europe ■ Middle East & Africa ■ Asia-Pacific ■ Mexico & Latin America ■ Canada ■ India ■ Oceania

©1999-2007 CommVault Systems, Inc. All rights reserved. CommVault, CommVault and logo, the "CV" logo, CommVault Systems, Solving Forward, SIM, Singular Information Management, Simpana, CommVault Galaxy, Unified Data Management, QiNetix, Quick Recovery, QR, QNet, GridStor, Vault Tracker, QSnap, Recovery Director, CommServe, CommCell, and InnerVault are trademarks or registered trademarks of CommVault Systems, Inc. All other third party brands, products, service names, trademarks, or registered service marks are the property of and used to identify the products or services of their respective owners. All specifications are subject to change without notice.

